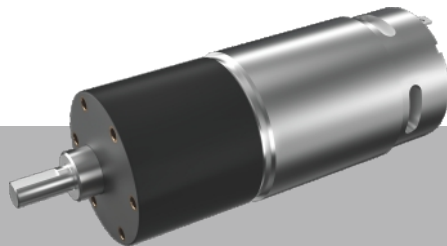


**37**  
mm

**Plastic P**



# MC037E

外壳材质 Material	输出轴承类型 Bearing	径向负荷 Radial load	轴向负荷 Axial load	输出轴最大承受压入力 Output shaft max press-in force	输出轴径向间隙 Output shaft radial clearance	输出轴轴向间隙 Output shaft axial clearance	空载背隙 No-load backlash
塑料 Plastic	含油轴承 Porous bearing	≤1Kgf	≤0.7Kgf	≤5Kgf	≤0.06mm	≤0.35mm	≤2°

齿轮级数 Gearbox Stages		3			4			5			6			7						
减速比 Reduction ratio		15	19	31	46	54	76	100	131	154	206	252	317	372	436	609	767	899	1054	1236
额定负载力矩 (Kg.cm max) Max rated torque (kg.cm)		2	2	3	3	3	4	4	5	5	6	6	6	6	6	6	6	6	6	6
瞬间负载力矩 (Kg.cm max) Max Instant torque (kg.cm)		6	6	9	9	9	12	12	15	15	18	18	18	18	18	18	18	18	18	18
效率 (%) Gearbox efficiency (%)		73	73	65	65	65	59	59	59	59	53	53	53	53	53	48	48	48	48	48
齿轮箱长度L1 (mm) Gearbox length L1 (mm)		22		24.5			27			29.5			32							
总长L0 (mm) Overall Length L0 (mm)		79		81.5			84			86.5			89							

使用相对湿度:20%~85%RH,使用温度范围:-15°C ~ 85°C。 Relative humidity: 20%~85%RH, Temperature range: -15°C ~ 85°C.

